

Behavioral Health in the Fire Service

Participant Manual



Behavioral Health
in the Fire Service




1

BEHAVIORAL HEALTH IN THE FIRE SERVICE

COURSE OBJECTIVES

1. Understand the concepts of behavioral health, mental health, and mental illness
2. Understand the major behavioral health concerns for firefighters, EMS personnel, and their families
3. Understand how behavioral health initiatives have developed and changed in the fire service and the future direction of behavioral health in the fire service



2

What is Behavioral Health?



3

BEHAVIORAL HEALTH

is a term used to refer to fields related to the study, assessment, diagnosis, treatment, and

PREVENTION

Of mental illness and substance abuse.



4

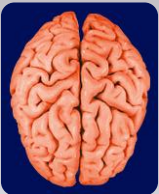
Think About:

- Mental Illness
- Coronary Disease
- Diabetes

What comes to mind?



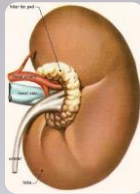
5



Mental Illness



Coronary Disease



Diabetes



6

- Mental illness, coronary disease, and diabetes:
- All affect an organ in the body
- All can be hereditary
- All can be exacerbated by stress
- All may be helped by diet and exercise
- All may be treated with medication

You can't cure or prevent any of them by "mind over matter"



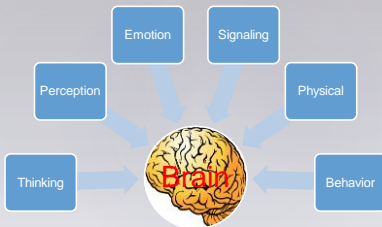
7

The one major difference is that mental health problems are often short term and reversible.



8

When mental health issues prevent the brain from **working properly**, one or more of its **6 functions** will be disrupted.



9

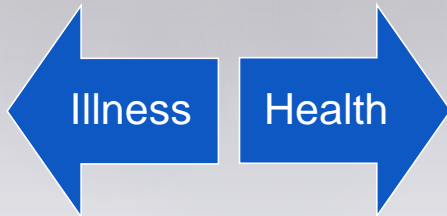
Mental health is as important as physical health.

- Good mental health contributes greatly to an overall feeling of well-being
- Untreated mental health disorders in adults can lead to diminished functioning, substance abuse, poor quality of life, and increased mortality
- Research shows untreated mental illness can slow healing from physical illnesses



10

Continuum of Behavioral Health



11

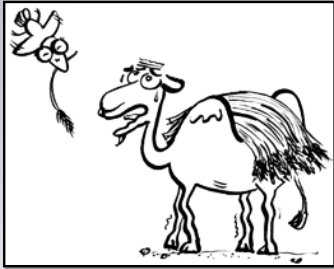
Factors that Increase Risk

- Being previously in treatment for another disorder
- Starting out as a firefighter at a young age
- Being unmarried
- Holding a supervisory rank in the fire service
- Proximity to death during a traumatic event
- Experiencing a series of events back-to-back



12

It's the little things...



13

Physical Injuries



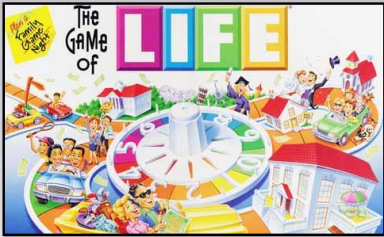
14

Competing Priorities



15

Significant Life Events



16

Shift Changes/Sleep Disturbances



17

Loss and Grief



18

Depression



- Persistent feelings of sadness or anxiety
- Loss of interest or pleasure in usual activities that lasts for more than two weeks
- Changes in appetite that result in weight loss or gain unrelated to dieting
- Insomnia or oversleeping
- Loss of energy or increased fatigue
- Restlessness or irritability
- Feelings of worthlessness or persistent guilt
- Difficulty thinking, concentrating, remembering or making decisions
- Ongoing body aches and pains,
- problems with digestion that are not caused by physical disease
- Increased drinking, cigarette smoking, or using prescription or illicit drugs
- **Thoughts of death or suicide or attempted suicide**



19

Anxiety



- Painful, intrusive memories; recurring nightmares
- Fatigue, headaches, muscle tension, muscle aches, irritability, or difficulty swallowing
- Persistent obsessive thoughts
- Intense feelings of panic and fear
- Sweating, trembling, nausea, and difficulty talking
- Excessive, irrational or ongoing anxiety or fear
- Feelings of dread



20

Post-Traumatic Stress Disorder

- Hopelessness about the future
- Memory problems
- Trouble concentrating
- Difficulty maintaining close relationships
- Irritability or anger
- Overwhelming guilt or shame
- Self-destructive behavior, such as drinking too much
- Trouble sleeping
- Being easily startled or frightened
- Hearing or seeing things that aren't there
- Flashbacks, or reliving the traumatic event for minutes or even days at a time
- Upsetting dreams about the traumatic event
- Trying to avoid thinking or talking about the traumatic event
- Feeling emotionally numb
- Avoiding activities you once enjoyed



21

Responder Fatigue Syndrome

Cognitive	Emotional	Behavioral	Spiritual	Personal Relationships	Physical Somatic	Work Performance
Lowered concentration Decreased self-esteem Apathy Rigidity Disorientation Perfectionism Minimization Preoccupation with trauma Thoughts of self-harm or harm to others	Powerlessness Anxiety Guilt Anger/rage Survivor guilt Shutdown Fear Helplessness Sadness Depression Emotional roller coaster Depleted Overly sensitive	Impatient Irritable Withdrawn Moody Regression Sleep disturbance Nightmares Appetite changes Hypervigilant Elevated startle response Accident proneness Losing things	Questioning the meaning of life Loss of purpose Lack of self-satisfaction Pervasive hopelessness Anger at God Questioning of prior religious beliefs Loss of faith in a higher power Greater skepticism about religion	Withdrawal Decreased interest in intimacy or sex Mistrust Isolation from others Over-protection as a parent Projection of anger or blame Intolerance Loneliness Increased interpersonal conflicts	Shock Sweating Rapid heartbeat Breathling difficulties Aches and pains Dizziness Increased number and intensity of medical maladies Other somatic complaints Impaired immune system	Low morale Low motivation Avoiding tasks Obsession about details Apathy Negativity Lack of appreciation Detachment Poor work Staff conflicts Absenteeism Exhaustion Irritability Withdrawal from colleagues



22

Alcohol Abuse

- Have you ever felt you should **C**ut down on your drinking?
- Have people **A**nnoyed you by criticizing your drinking?
- Have you ever felt bad or **G**uilty about your drinking?
- Have you ever had a drink first thing in the morning (as an **E**ye opener?) to steady your nerves or get rid of a hangover?



23

Legal and Illegal Drugs



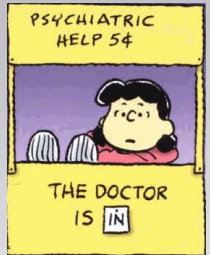
- Oxycontin
- Percocet
- Dexedrine
- Ritalin
- Concerta
- Valium
- Xanax



24

In the beginning...

- Firefighting ranks among the most stressful and demanding occupations (Gist & Woodall, 1995)
- Critical Incident Stress Debriefing (CISD) became a movement in the industry, prevent negative outcomes (Mitchell, 1983)
- Control critical incident stress with effective use of ICS
- NFPA 1500 includes CISM
- Accepted need for behavioral health assistance



25

Where is it going?

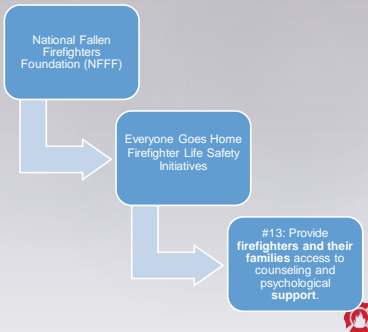
- Psychological Assistance Programs
- Employee Assistance Programs (EAPs)
- Evolution away from CISM
- Institution of Peer Support Team models
- Stress First Aid (SFA) adopted from the military models
- Eye Movement Desensitization and Reprocessing (EMDR)



26



Firefighter Life Safety Initiatives



27

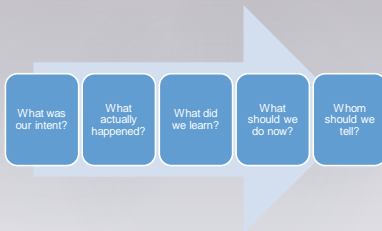
7 Strategies of Initiative #13

1. Debrief using operational strategies rather than clinical
2. Individualize interventions using screening tools to help first responder determine if/what help is needed
3. Recognize that not everyone is effected by an event and intervention is variable
4. Offer Employee Assistance Programs (EAPs)
5. Train peer support programs to promote wellness and recognize early signs of stress
6. Utilize resources to offer first responders, their families at home, and the organization immediate access to self-help
7. Provide training to Behavioral Health professionals and other supporting first responders



28

AFTER ACTION REVIEW



29

TRAUMA SCREENING QUESTIONNAIRE

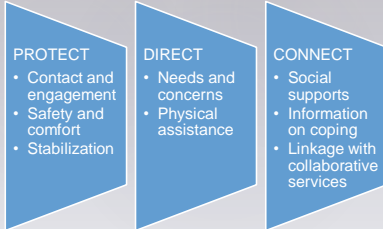
- Bodily reactions (fast heartbeat, stomach churning, sweatiness, dizziness) when reminded of the event
- Difficulty falling or staying asleep
- Irritability or outbursts of anger
- Difficulty concentrating
- Heightened awareness of potential dangers to yourself and others
- Being jumpy or being startled at something unexpected
- Upsetting thoughts or memories about the event that have come into your mind against your will
- Upsetting dreams about the event
- Acting or feeling as though the event were happening again
- Feeling upset by reminders of the event

If you experience 6 or more in a 2-week period, seek help!



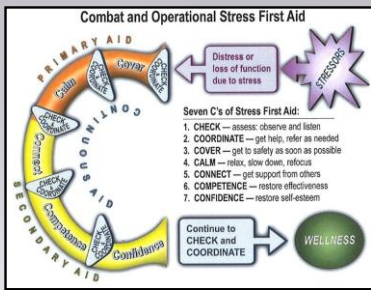
30

PSYCHOLOGICAL FIRST AID



31

STRESS FIRST AID



32

Bring it Home



- Daily self-assessment
- Consider the people working next to you at your organizations and their needs
- Become familiar with Life Safety Initiatives
- CISM has its place; PFA and SFA are there daily
- Leaders don't need bugles
- Only time you need to keep an 'open mic'



33

Finding a Model that Works



- One size does not fit all
- Individual, department, regional differences
- Assessment tools available
- Community resources
- Don't force a program or concept that doesn't fit



34

Finding a Model that Works



35

Wrap Up



36

Questions?

National Volunteer Fire Council
1-888-ASKNVFC (275-6832)
nvfc@nvc.org
www.nvfc.org